

The nicest
way to heat.

Cozy warmth in
accord with nature.

RATH



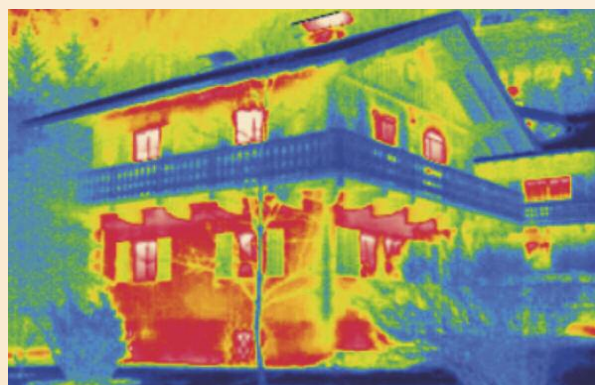
Feeling comfortable can be so easy.

You come home and look forward to cozy warmth. You feel and see the flickering fire spreading sheer comfort. Only heating with wood can give you this unsurpassed feeling. It warms both house and soul, as the mild radiant heat conveys an even thermal balance and feels like the natural warmth of the sun. What does nature have to say about this? It is grateful because modern basic tiled stoves are energy-saving, to a large extent carbon neutral and environmentally friendly.

One wooden log, two hours of warmth.

How much heat does a detached house require? It depends on the insulation and the region. In Germany it is 160 kilowatt per hour and square meter, in Austria 170, in each case for a heating period of 100 days.

That is to say: a 25 m² living room has a heat requirement of approx. 1.8 (kWh). Double that amount can be achieved with one wooden log – 3.8 (kWh), that is two hours of consistent cozy warmth.



Coziness is guaranteed.

The basic tiled stove. Unbeatably cozy and efficient.

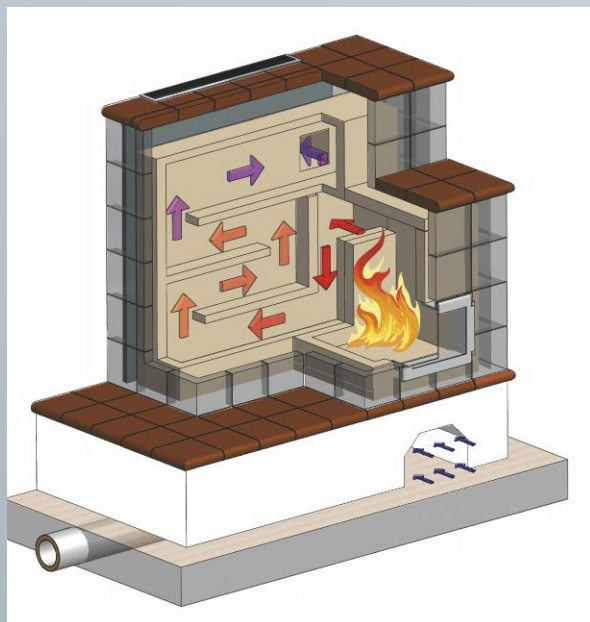
Do you like it to be cozy and warm without having to continually add wood? Then the basic tiled stove should be your first choice. With one load of about 8 kg of wood you can enjoy 12 to 16 hours of warmth.

The functional principle is ingeniously simple. Instead of going up the chimney the warm air flows through chamotte bricked flues. This clay material stores the heat and then emits it very slowly and uniformly. A tiled stove transforms the energy in the wood very efficiently, almost 90 percent.

The name basic tiled stove expresses the fact that it is built "from scratch". The stove fitter can plan your stove individually and thereby fulfill any design that you wish, whether rustic or modern, with tiles, plastered surface or natural stone. For example, with a large window to enjoy the additional benefit of viewing the fire. The mild radiation heat and constant room climate also make it ideal for allergy sufferers.

Due to the uniform emission of heat there is less air circulation than in conventional heating systems. The dust content of the room air is therefore reduced at the same time with a significantly more pleasant feeling of warmth.

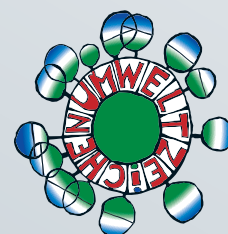
It not only provides a feeling of well-being with its pleasant warmth, it has a guaranteed source of fuel and saves heating costs, it also contributes to sustainable climate protection and if it complies with certain provisions can be



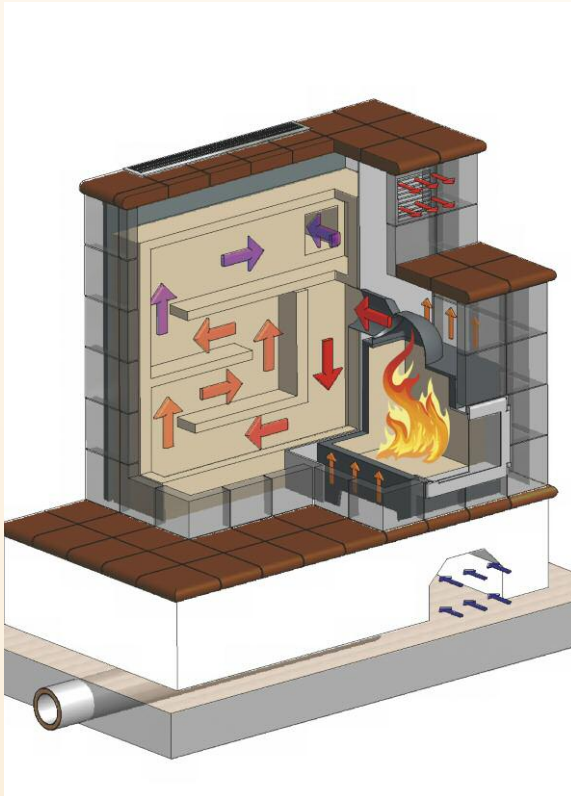
*all data for 15 kg wood, manufacturer's data: 4kW/h, Heating period depending on construction method: 8-24 hrs.

awarded the Austrian Environment Symbol as a certificate of sustainable environmental friendliness. An important requirement for this though is that the basic tiled stove is built by a stove fitter certified with this Environment Symbol and that it remains not only below today's legal emission limits but also the new guidelines that will come into effect in 2015.

Consequently the basic tiled stove is not only unsurpassed in comfort and efficiency but also already fulfils today the requirements of tomorrow.



Function of basic stove cross section



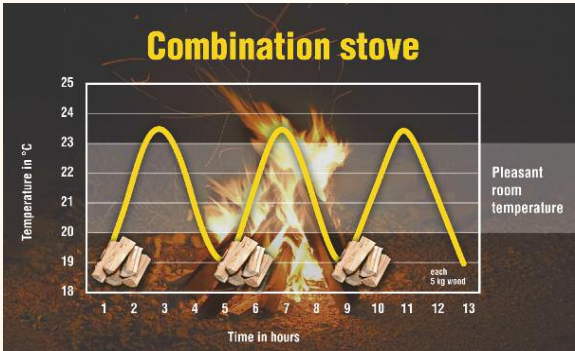
Combination stove cross section

The combination stove. Visual appearance and function combined.

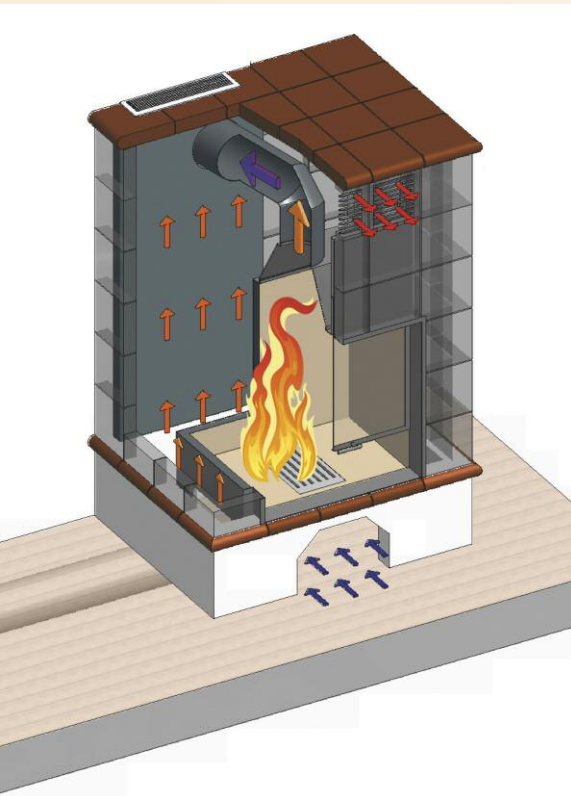
Enjoying the allure of fire and at the same time comforting heat? One does not exclude the other. An ideal compromise makes it possible – the combination stove. It combines the storage quality of the basic tiled stove with the visual appearance of a blazing fire.

The combustion chamber is a cast iron heating element with a large viewing glass.

Instead of going up the chimney the warm air flows through a chamotte bricked flue system. It stores energy and emits it as healthy radiant heat over a certain period of time. Only after about five hours do you need to put more wood on the fire.



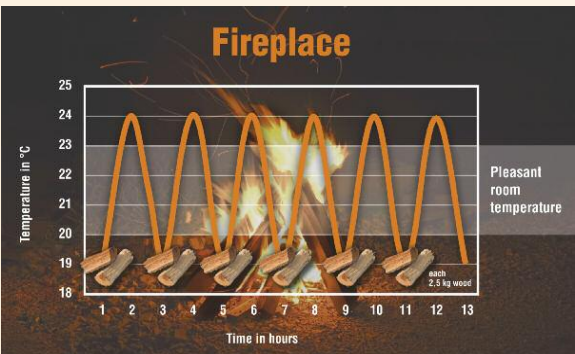
*all data for 15 kg wood, manufacturer's data: 4kW/h, Heating period depending on construction method: 5-12 hrs.



Fireplace cross section

The fireplace. Experience fire with individually tailored design.

You can see the wood log blazing in the fire and quickly feel the warmth. The fire is the most important thing in a fireplace. After lighting the fire the large glass door, iron grate and flue tube immediately emit heat into the room. Within a short period of time there is a high heating effect. A small part of the heat is stored in the few chamotte panels or tiles of the stove casing. However when the fire goes out the heat dwindles quickly.



*all data for 15 kg wood, manufacturer's data: 4kW/h, Heating period depending on construction method: 1-3 hrs.

Room to enjoy.



Design varieties of basic stoves





Wood stove

The wood stove. Wood fire, simple and cheap.

You may already know this type of stove. It is the quickest and cheapest heat provider if you want to enjoy a romantic wood fire. You not only heat ecologically but also quickly create heat.

The metal body is often cased with tiles or natural stone whereby the large glass door enables a view of the fire. The heat is distributed by convection and radiation.

A wood stove is only suitable as an additional source of heat. It can replace the heating for a short time between seasons and during winter can assist it. Other advantages are the low price and the simple assembly and disassembly. When you move house you can simply take it with you.

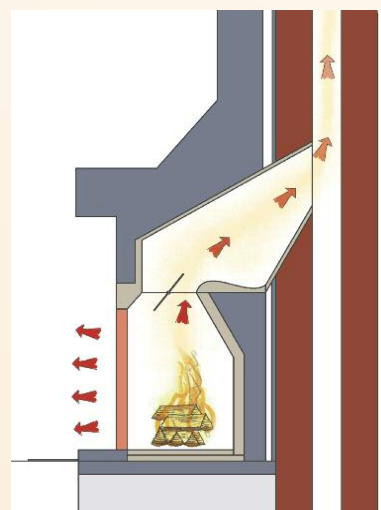


Open fireplace

The open fireplace. Stylish campfire atmosphere.

A crackling fire that you can see and hear; that is sheer romanticism. You can enjoy the evening with a glass of good wine in a very special atmosphere.

An open fireplace is part of an elegant atmosphere and gives you the feeling of sitting beside a campfire. All of that is what makes it special, heating becomes secondary. This cannot be described as an efficient source of heat as the heat is lost mainly up the chimney. Comfortable warmth can only be felt close to the fire.



Open fireplace cross section

Environmentally friendly and always available.

You would prefer to invest your money in a tiled stove instead of heating costs? A good idea! In the long run you save a lot of money and the environment can breathe a sigh of relief. No more CO² is produced when burning wood than the tree took from the atmosphere during growth. Consequently, today modern tiled stoves fulfill the environmental norms that will come into effect in 2015 and are characterized by emission values that are well below the strict guidelines. In addition wooden logs will always be available in the future as this raw material is the only one which continually regenerates. Our forestry industry plants as many young trees as old trees that are cut.

Your wishes, optimally implemented.

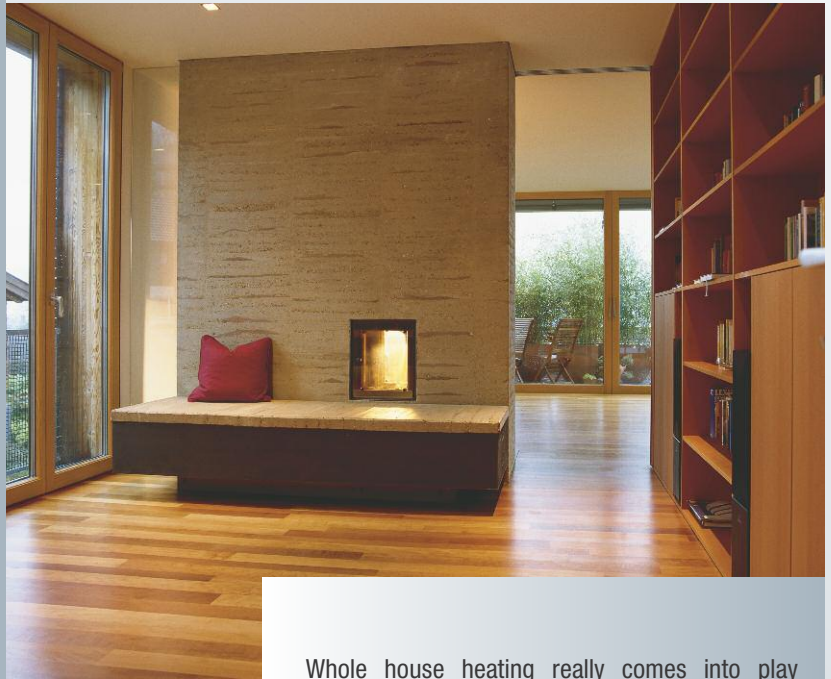
Whatever you do consult an expert who can calculate and plan your heating system. Your local stove-fitter takes all heat sources and the heat consumption into consideration. He can find a solution that complies with the style of your house and your wishes.

Find out more at www.rath.at. We will be pleased to help you find a competent stove-fitter in your area.

Individual and independent like you.

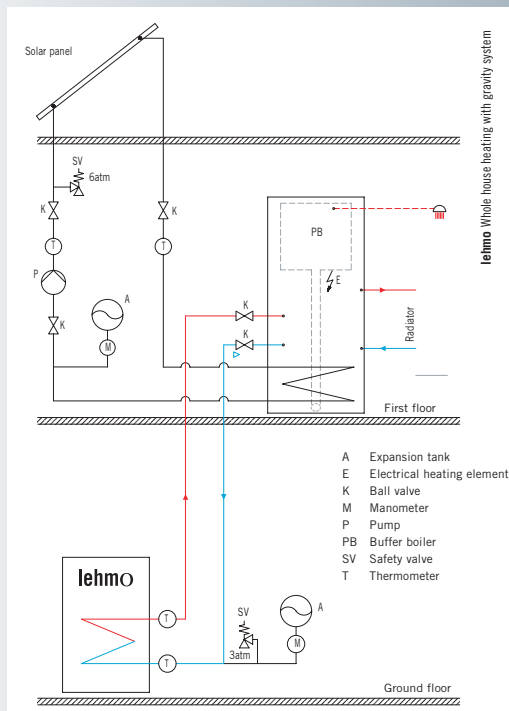
Whole house heating. Bundled efficiency under one roof.

Today the tiled stove is not only space heating – with a combination of sun and wood it offers an unrivaled energy concept that is second to none. According to the basic principle of the storage stove heat is stored and then emitted over a long period of time. One of the many advantages that this heating concept offers results from the installation of absorbers. Thus a part of the heat produced can be used for heating distribution and hot water production and the other part directly as room heating. Consequently you can enjoy not only comfortable heat but also provide the house with hot water.



Whole house heating really comes into play when used with renewable energy. It offers the possibility of effectively combining and coordinating wood burning with other systems such as solar energy, heat exchangers and heat pumps. Ideally in conjunction with a solar heating system – in winter it supports the stove heating and in summer it provides hot water. In addition in several states and municipalities in Austria there is financial aid for this environmental friendly type of heating.

Under certain circumstances a whole house heating, as opposed to other heating systems on the market today, can be designed as a gravity system which means that no pump is required and the system functions completely without external energy (electricity). It should be clarified with an expert during the planning phase whether the requirements for this special system are available.



Top quality from Austria –
Rath Stove Chamotte



www.rath.at

